

ORIGINAL ARTICLE / ОРИГИНАЛНИ РАД

Correlation between myocardial perfusion imaging findings and future cardiac events in patients with type 2 diabetes mellitus

Siniša Stanković^{1,2}, Dragana Šobić-Šaranović^{3,4}, Valentina Soldat-Stanković^{1,5}, Vera Artiko^{3,4}, Zvezdana Rajkovača^{1,2}, Gostimir Mikač⁶, Nataša Egeljić-Mihailović^{1,2}, Marina Majkić^{1,2}

¹University of Banja Luka, Faculty of Medicine, Banja Luka, Republic of Srpska, Bosnia and Herzegovina;

²University Clinical Center of the Republic of Srpska, Department of Nuclear Medicine and Thyroid Gland Diseases, Banja Luka, Republic of Srpska, Bosnia and Herzegovina;

³University of Belgrade, Faculty of Medicine, Belgrade, Serbia;

⁴University Clinical Center of Serbia, Center for Nuclear Medicine, Belgrade, Serbia;

⁵University Clinical Center of the Republic of Srpska, Clinic of Internal Medicine, Banja Luka, Republic of Srpska, Bosnia and Herzegovina;

⁶Specialist Center for Thyroid Gland Diseases, Banja Luka, Republic of Srpska, Bosnia and Herzegovina



SUMMARY

Introduction/Objective Myocardial perfusion imaging (MPI) is clinically useful for the evaluation of coronary artery disease in patients with diabetes mellitus. However, the prevalence of ischemia and its ability to predict future cardiac events is less clear. The aim was to determine the incidence of cardiac events in diabetic patients and the relationship between them and MPI findings.

Methods Two cohorts of patients, 98 diabetics and 100 non-diabetics, with medium- to high-risk of coronary artery disease without previous coronary revascularization, were studied prospectively. All of them were outpatients who underwent ^{99m}Tc-sestamibi MPI with dipyridamole. The data about cardiac events were collected during a follow-up period of two years.

Results Cardiac events occurred in 17.3% diabetics and in 8% non-diabetics ($p = 0.048$). Diabetics had shorter estimated event-free time of 24.7 months (95% CI 23.2–26.2) versus non-diabetics' estimated event-free time of 28.5 months (95% CI 27.4–29.5) ($p = 0.046$). The independent predictors of cardiac events were male sex ($p = 0.010$), previous myocardial infarction ($p < 0.001$), presence of the symptoms of angina ($p = 0.014$), and all variables derived from MPI findings. After adjustment for variables derived from MPI findings, the significant predictors in diabetics were the size of stress perfusion defect ($p = 0.022$), summed stress score ($p = 0.011$), and summed difference score ($p = 0.044$).

Conclusion In diabetic patients, the cumulative rate of cardiac events was higher and the event-free survival was worse. MPI could help in prediction of cardiac events in diabetics and the most important predictors were size of stress perfusion defect, summed stress score, and summed difference score.

Keywords: myocardial perfusion imaging; diabetes mellitus; coronary artery disease; cardiac events

INTRODUCTION

Coronary artery disease (CAD) has now become a common cause of mortality and morbidity worldwide [1]. Furthermore, caring for patients with known or suspected CAD poses tremendous economic pressure on healthcare resources, not only due to costs related to testing and treatment, but also those associated with loss of productivity in afflicted individuals [1]. The worldwide prevalence of diabetes mellitus (DM) is increasing, concurrently with obesity and other comorbid conditions [2]. Despite significant advances in medical and invasive therapy, CAD is the leading cause of morbidity and mortality in patients with DM [3]. The diagnosis of CAD is complicated by the often atypical presentation of patients with DM attributable to concomitant autonomic neuropathy and other disorders. It is important to identify CAD early in these patients to optimize medical therapy and lifestyle modifications,

and especially important to identify and aggressively treat those at the highest risk of events. The value of single-photon emission computed tomography (SPECT) myocardial perfusion imaging (MPI) in the evaluation of diabetic patients has been widely investigated [4, 5]. MPI is clinically useful for the evaluation of CAD in patients with DM. In diabetic patients with suspected or known CAD, a strong evidence base has been accumulated that MPI provides diagnostic and incremental prognostic information [4, 6, 7, 8]. The prognostic impact of ischemia together with other clinical and stress variables has been reported previously [4]. However, the prevalence of ischemia and its ability to predict those who experience future cardiac events is less clear in patients with DM with or without symptoms referred for MPI.

The aim of the study was to determine the incidence of cardiac events in diabetic patients and relationship between them and MPI findings.

Received • Примљено:

March 29, 2021

Revised • Ревизија:

June 21, 2021

Accepted • Прихваћено:

July 1, 2021

Online first: July 6, 2021

Correspondence to:

Siniša STANKOVIĆ
Department of Nuclear Medicine
and Thyroid Gland Diseases
University Clinical Center of the
Republic of Srpska
12 beba bb
78000 Banja Luka
Republic of Srpska
Bosnia and Herzegovina
sinisa.stankovic@med.unibl.org

METHODS

Patient selection

The study population consisted of two cohorts of patients with medium- to high-risk of CAD without previous coronary revascularization. In the study group, there were 98 patients with type 2 DM and there were 100 patients without DM in the control group. All of them were outpatients who underwent ^{99m}Tc -sestamibi SPECT MPI with pharmacologic stress using dipyridamole. The test was requested for assessment of myocardial ischemia in all the patients. The patients in the study group had previously diagnosed DM and were treated with insulin or oral hypoglycemic agents. Selection of patients was performed so that the groups were matched with no significant differences between them regarding classical risk factors of CAD [age, sex, body mass index, smoking, arterial hypertension, previous myocardial infarction (MI), and symptoms of angina]. The study was conducted prospectively under the rules of the Declaration of Helsinki. The informed consent was obtained from all subjects before testing. The local medical ethics committee approved the study protocol. Before the test, a structured interview was performed and a clinical history was obtained, including assessment of cardiac risk factors. Furthermore, the measurements of patient height and weight were performed. Hypertension was defined as blood pressure above 140/90 mmHg or need for antihypertensive medication. Dyslipidemia was defined as the need for lipid-lowering medication. Subjects were considered symptomatic if they were experiencing chest pain or shortness of breath thought to be of possible cardiac origin.

Stress protocol and SPECT MPI

Stress testing and stress/rest gated SPECT MPI was performed as per guidelines of the European Association of Nuclear Medicine (EANM) [9]. The patients underwent intravenous vasodilator stress using dipyridamole (0.56 mg/kg over four minutes). At four minutes after completion of the dipyridamole infusion, a bolus of 550 MBq ^{99m}Tc -sestamibi (technetium-99m methoxy-isobutyl-isonitrile) was intravenously injected. In the event of chest pain, significant ST depression, or other symptoms, a dose of 125 mg of aminophylline was administered intravenously two minutes after injection of the radiotracer. SPECT MPI was performed using the two-day protocol. Each participant had gated stress using eight frames per R-R cycle and non-gated rest SPECT MPI. For resting studies, 550 MBq of the same tracer was injected at least 24 hours after the stress test. Image acquisition was performed with a commercially available SPECT camera system (Optima[™] NM/CT 640, GE Healthcare, Chicago, IL, USA). Radiopharmaceutical dosing, SPECT acquisition, and image processing were performed within previously mentioned guidelines established by the EANM [9]. All images were obtained 60 minutes after radiotracer injection using rotating dual-head gamma camera equipped with low-energy, high-resolution, parallel hole collimator with 30% (\pm 15%) symmetric energy window centered at

140 keV. Sixty-four projections (40 seconds per projection), with a 64×64 matrix were obtained over a 180° orbit. No attenuation or scatter correction was used.

Image interpretation

Relative perfusion distribution was analyzed semiquantitatively using standardized segmentation of 17 myocardial segments. Each segment was scored by the consensus of two experienced observers using a five-point scoring system (0 = normal; 1 = equivocal; 2 = moderate; 3 = severe reduction; and 4 = absence of tracer uptake in a segment). The summed stress score (SSS) was obtained by adding the scores of the 17 segments of the stress images. The summed rest score (SRS) was obtained by similarly adding the scores of the 17 segments of the rest images. The sum of the differences between each of the 17 segments on the stress and rest images was defined as the summed difference score (SDS), a variable representing the amount of ischemia present. A scan was considered normal if the SSS was 3 or lower, mildly abnormal if the SSS was 4–8, moderately abnormal if the SSS was 9–13, and severely abnormal if the SSS was more than 13, as previously reported [10, 11]. The $\text{SDS} < 2$ was considered to be no ischemia, 2–4 mild ischemia, 5–8 moderate ischemia, and > 8 severe ischemia [10, 11]. An automated software program the Emory Cardiac Toolbox[™] (ECTb[™], Emory University School of Medicine, Atlanta, GA, USA) was used to calculate left ventricular ejection fraction (LVEF) and the variables incorporating both the extent and severity of perfusion defects.

Patient follow-up

Collection of follow-up data was obtained by reviewing hospital records, by contacting the patient's general practitioner, and/or by contacting the patient by phone during the period of approximately two years. The date of the last review or consultation was used to determine the follow-up time. End points were developments of the following cardiac events: cardiac mortality, nonfatal MI, or coronary revascularization by percutaneous coronary intervention or coronary artery bypass grafting. Cardiac mortality was defined as a death caused by acute MI, significant cardiac arrhythmias, or refractory congestive heart failure. Sudden death occurring without another explanation was included as cardiac mortality. Nonfatal MI and coronary revascularization were confirmed by reviewing hospital records. Patients with other-cause mortality were excluded from the study.

Statistical analysis

Baseline characteristics of patients were compared by Student's *t* or Mann–Whitney *U* tests for continuous variables and χ^2 or Fisher's exact tests for categorical variables where appropriate. Univariate Cox proportional hazard regression model was used to identify independent predictors of cardiac events. The risk of a variable was expressed

as a hazard ratio with corresponding 95% confidence interval (CI). Univariate Cox regression model was used to investigate the association between cardiac events and DM, after adjustment for variables derived from MPI findings LVEF, end diastolic volume, end systolic volume (ESV), systolic volume, presence of stress defect, presence of ischemia, SSS, SRS, and SDS. Survival curves as a function of time (months) were generated with the Kaplan–Meier method. A p -value < 0.05 was considered statistically significant. Statistical analyses were performed using the statistical software platform IBM SPSS Statistics, Version 22.0 (IBM Corp., Armonk, NY, USA).

RESULTS

Study population and MPI findings

The demographics, clinical characteristics and MPI results among diabetics and non-diabetics are shown in Tables 1 and 2, respectively. There were no significant differences of classical risk factors between the groups except of dyslipidemia and family history of diabetes, which were higher among the diabetics ($p = 0.004$ and $p < 0.001$). Perfusion and non-perfusion variables were obtained from MPI for all the patients. Diabetics had lower LVEF ($p = 0.018$), higher ESV ($p = 0.039$), and higher proportion of them were with abnormal ESV ($p = 0.049$). There were no significant differences of perfusion variables between the groups.

Table 2. Myocardial perfusion imaging findings

Characteristics	DM (n = 98)	non-DM (n = 100)	p	
LVEF US, %	54.7 ± 9.9	57.8 ± 6.9	0.013	
LVEF SPECT, %	64 ± 14.3	68.6 ± 12.3	0.018	
LVEF SPECT ≥ 50%, n (%)	84 (85.7)	92 (92)	0.159	
EDV, ml	104 (43–318)	97 (41–214)	0.133	
ESV, ml	34 (4–245)	29.5 (6–140)	0.039	
SV, ml	67.5 ± 16.4	67.5 ± 16.8	0.983	
Abnormal ESV, n (%)	27 (27.6)	16 (16)	0.049	
SSS	0 (0–19)	0 (0–23)	0.093	
SRS	0 (0–18)	0 (0–20)	0.606	
SDS	0 (0–15)	0 (0–18)	0.094	
Abnormal stress MPI (SSS ≥ 4), n (%)	33 (33.7)	24 (24)	0.133	
Severity of stress defect, n (%)	SSS < 4 – no defect	65 (66.3)	76 (76)	0.095
	SSS 4–8 – mild	13 (13.3)	13 (13)	
	SSS 9–13 – moderate	12 (12.2)	7 (7)	
	SSS > 13 – severe	8 (8.2)	4 (4)	
Ischemia (SDS ≥ 2), n (%)	18 (18.4)	12 (12)	0.212	
Severity of ischemia, n (%)	SDS < 2 – no ischemia	80 (81.6)	88 (88)	0.145
	SDS 2–4 – mild	0 (0)	6 (6)	
	SDS 5–8 – moderate	6 (6.1)	2 (2)	
	SDS > 8 – severe	12 (12.2)	4 (4)	

DM – diabetes mellitus; LVEF – left ventricular ejection fraction; US – ultrasound; SPECT – single photon emission computed tomography; EDV – end diastolic volume; ESV – end systolic volume; SV – systolic volume; SSS – summed stress score; SRS – summed rest score; SDS – summed difference score; MPI – myocardial perfusion imaging

Table 1. Baseline characteristics of the cohorts

Baseline characteristics	DM (n = 98)	non-DM (n = 100)	p
Male, n (%)	55 (56.1)	45 (45)	0.118
Age, years	66.8 ± 7.2	66.9 ± 7.7	0.952
Body mass index, kg/m ²	30.2 ± 4.8	29.2 ± 5	0.137
Hypertension, n	96	97	NS
Previous MI, n (%)	18 (18.4)	18 (18)	0.947
Smokers (anytime), n (%)	50 (51)	51 (51)	0.998
Smokers (current), n (%)	11 (11.2)	15 (15)	0.432
Dyslipidemia, n (%)	72 (73.5)	54 (54)	0.004
Family history of DM, n (%)	61 (62.2)	28 (28)	< 0.001
Family history of CAD, n (%)	73 (74.5)	76 (76)	0.806
Symptoms of angina, n (%)	61 (62.2)	64 (64)	0.798

DM – diabetes mellitus; MI – myocardial infarction; CAD – coronary artery disease

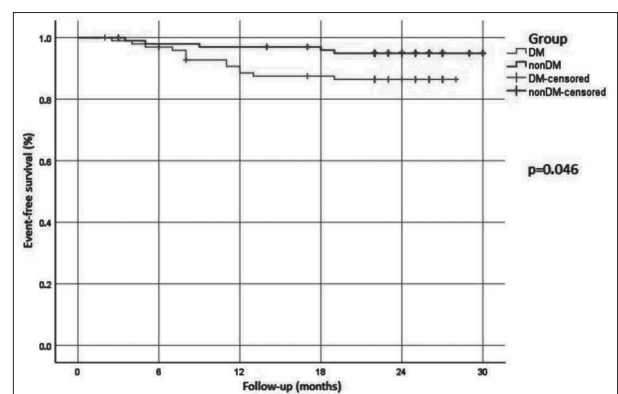


Figure 1. Kaplan–Meier event-free survival curves

Follow-up, outcomes, and survival analysis

Median of follow-up period did not differ significantly between the two groups (26 vs. 24 months; $p = 0.184$). During this period of time, cardiac events occurred in 17.3% of the diabetics and in 8% of the nondiabetics ($p = 0.048$) (Table 3).

Event-free survival curves were constructed using the Kaplan–Meier method to account for censored survival times (Figure 1). The diabetics had shorter estimated event-free time (24.7 months; 95% CI 23.2–26.2) compared to the non-diabetics (28.5 months; 95% CI 27.4–29.5) ($p = 0.046$).

Predictors of cardiac events

The results of the univariate Cox proportional hazards analysis predicting cardiac events are given in Table 4. The independent predictors were male sex ($p = 0.010$), previous MI ($p < 0.001$), presence of the symptoms of angina ($p = 0.014$) and all variables derived from MPI findings. DM was not significant, but borderline predictor of cardiac events in

Table 3. Follow-up period and outcomes

Characteristics		DM (n = 98)		non-DM (n = 100)		p
Follow-up, months		26 (2–28)		24 (3–30)		0.184
Cardiac event n (%)	Cardiac death	2 (2)	17 (17.3)	1 (1)	8 (8)	0.048
	Non-fatal MI	2 (2)		2 (2)		
	Revascularization	13 (13.3)		5 (5)		

DM – diabetes mellitus; MI – myocardial infarction

Table 4. Predictors of cardiac events in the univariate Cox analysis

Variable	HR (95% CI)	p
DM	2.3 (0.99–5.3)	0.053
Sex (f/m)	0.3 (0.1–0.8)	0.010
Body mass index	1 (0.9–1.1)	0.867
Hypertension	0.6 (0.1–4.2)	0.574
Previous myocardial infarction	5.9 (2.7–12.9)	< 0.001
Smokers (anytime)	2.7 (1.1–6.4)	0.027
Smokers (current), n (%)	0.9 (0.3–3)	0.877
Dyslipidemia	1.3 (0.5–2.9)	0.596
Family history of DM	1.7 (0.7–3.6)	0.213
Family history of CAD	1 (0.4–2.6)	0.938
Symptoms of angina	4.5 (1.4–15.1)	0.014
LVEF SPECT, %	0.9 (0.9–1)	< 0.001
Presence of normal LVEF SPECT	0.2 (0.1–0.4)	< 0.001
EDV, mL	1.01 (1.01–1.02)	< 0.001
ESV, mL	1.01 (1.01–1.02)	< 0.001
Presence of normal ESV	0.2 (0.1–0.4)	< 0.001
SV, mL	1.02 (1.00–1.05)	0.025
Presence of stress perfusion defect	119.1 (4–3574.9)	0.006
Size of stress perfusion defect, %	1.1 (1.1–1.2)	< 0.001
Presence of ischemia	82.4 (19.3–351.1)	< 0.001
Size of ischemia, %	1.2 (1.1–1.2)	< 0.001
SSS	1.2 (1.2–1.3)	< 0.001
SRS	1.1 (1.1–1.2)	< 0.001
SDS	1.3 (1.2–1.4)	< 0.001
Abnormal stress MPI (SSS \geq 4)	498.2 (3.6–69325.6)	0.014
Severity of stress defect	5.2 (3.5–7.8)	< 0.001
Ischemia (SDS \geq 2)	112.5 (26.3–481)	< 0.001
Severity of ischemia	4.6 (3.2–6.6)	< 0.001

HR – hazard ratio; CI – confidence interval; DM – diabetes mellitus; CAD – coronary artery disease; LVEF – left ventricular ejection fraction; SPECT – single photon emission computed tomography; EDV – end diastolic volume; ESV – end systolic volume; SV – systolic volume; SSS – summed stress score; SRS – summed rest score; SDS – summed difference score; MPI – myocardial perfusion imaging

univariate Cox proportional hazards analysis. The association between cardiac events and DM was determined using univariate Cox regression model after adjustment for variables derived from MPI findings (Table 5). The significant predictors were size of stress perfusion defect ($p = 0.022$), SSS ($p = 0.011$) and SDS ($p = 0.044$).

DISCUSSION

In our study, the groups were matched and there were no significant differences between them regarding classical risk factors of CAD (age, sex, body mass index, smoking, arterial hypertension, previous MI, and symptoms of angina) except of prevalence of dyslipidemia and family history

of diabetes, which were higher among the diabetics ($p = 0.004$ and $p < 0.001$). These were expected since diabetics have higher prevalence of dyslipidemia and 2–4 times higher prevalence of family history of diabetes than non-diabetics [12, 13].

We found that diabetics had lower LVEF ($p = 0.018$), in accordance with some other studies. Ehl et al. [14] showed that diabetics

had a lower LVEF determined by MPI than non-diabetics ($p = 0.001$) and this difference could be demonstrated regardless of CAD extent (no significant differences of SSS, SRS, and SDS) and might in part explain their generally worse cardiac survival compared with non-diabetics. Chareonthaitawee et al. [15] found that one of six asymptomatic diabetic patients without known CAD referred for MPI had reduced LVEF. The annual mortality rates of the groups with and without reduced LVEF were 7% and 4%, respectively.

In recent years, a large body of literature has established the prognostic significance of MPI in the general population [7, 16, 17]. It was shown that patients with normal stress MPI studies had remarkably low cardiac event rates ($< 1\%$ per year) and the event rate was proportional to the extent of stress-induced hypoperfusion. In patients with a normal MPI SPECT, there was an annual death rate of 0.3% compared with 2.9% in patients with severely abnormal scans [10]. The nonfatal MI rate in another study also increased in relation to the SSS [3].

Diabetic patients have multitude of characteristic features including higher prevalence of multi-vessel and small vessel CAD, frequent silent myocardial ischemia and infarction with higher cardiac event rates, and the presence of autonomic dysfunction. This together with the prevalence of diabetic cardiomyopathy contributes to a higher cardiovascular mortality [18, 19]. Furthermore, diabetic patients have higher prevalence of cardiovascular co-morbidities as compared to patients without diabetes [20, 21]. Two-thirds of diabetic patients will die of heart or vascular disease, and patients with CAD and DM have worse outcomes and a much higher cardiac event rate than their nondiabetic counterparts [22, 23].

Our study demonstrates that the two-year cumulative rate of cardiac events was higher (17.3% vs. 8%) and the event-free survival was worse in diabetics (24.7 vs. 28.5 months) than that seen in patients without DM. We found that the independent predictors of cardiac events were male sex, previous MI, presence of the symptoms of angina and all variables derived from MPI findings, but in diabetics the most important predictors were the size of stress perfusion defect, SSS, and SDS. There are numerous similar evidences in previous work of many authors. Kang et al. [24] showed that diabetics had a higher event rate than nondiabetics with the same SSS. Giri et al. [4] showed in a multicenter trial that diabetics with ischemic defects had increased cardiac events than nondiabetics with the same level of ischemia. Despite this, an abnormal scan was an independent predictor of cardiac death and MI in both diabetic and nondiabetic groups.

Table 5. Association between cardiac events and diabetes mellitus using univariate Cox regression model after adjustment for variables derived from myocardial perfusion imaging findings

Adjusting variable	HR (95% CI)	P
LVEF SPECT, %	1.8 (0.8–4.2)	0.180
Presence of normal LVEF SPECT	2.1 (0.9–4.8)	0.094
EDV, mL	1.9 (0.8–4.5)	0.148
ESV, mL	1.9 (0.8–4.4)	0.153
Presence of normal ESV	1.8 (0.8–4.3)	0.167
SV, mL	2.3 (1–5.3)	0.054
Presence of stress perfusion defect	1.9 (0.8–4.5)	0.129
Size of stress perfusion defect, %	2.8 (1.2–6.6)	0.022
Presence of ischemia	1.6 (0.7–3.8)	0.263
Size of ischemia, %	2.2 (0.9–5.3)	0.069
SSS	3.2 (1.3–7.9)	0.011
SRS	2.3 (1–5.3)	0.052
SDS	2.4 (1–5.8)	0.044
Abnormal stress MPI (SSS \geq 4)	1.8 (0.8–4.2)	0.161
Severity of stress defect	1.7 (0.7–4)	0.223
Ischemia (SDS \geq 2)	2.2 (0.9–5.1)	0.079
Severity of ischemia	0.9 (0.4–2.2)	0.802

HR – hazard ratio; CI – confidence interval; LVEF – left ventricular ejection fraction; SPECT – single photon emission computed tomography; EDV – end diastolic volume; ESV – end systolic volume; SV – systolic volume; SSS – summed stress score; SRS – summed rest score; SDS – summed difference score; MPI – myocardial perfusion imaging

In the previous analyses of perfusion imaging, the cardiac event rates in diabetic patients were significantly higher compared with nondiabetic patients, and the event rates in diabetic patients were related to the presence or absence of perfusion abnormalities. Kang et al. [24] showed a higher cardiac event rate in diabetic patients than in nondiabetic patients, and the severity and size of the perfusion abnormalities as evaluated by the SSS were significantly related to the probability of a cardiac event. Giri et al. [4] demonstrated the incremental value of perfusion imaging in predicting cardiac events, and De Lorenzo et al. [6] showed that the risk is related to the number of territories involved, and the extent and severity of the stress defects

REFERENCES

- Benjamin EJ, Virani SS, Callaway CW, Chamberlain AM, Chang AR, Cheng S, et al. Heart Disease and Stroke Statistics-2018 Update: A Report From the American Heart Association. *Circulation*. 2018;137(12):e67–e492.
- Cho NH, Shaw JE, Karuranga S, Huang Y, da Rocha Fernandes JD, Ohlrogge AW, et al. IDF Diabetes Atlas: Global estimates of diabetes prevalence for 2017 and projections for 2045. *Diabetes Res Clin Pract*. 2018;138:271–81.
- Hachamovitch R, Hayes SW, Friedman JD, Cohen I, Berman DS. Comparison of the short-term survival benefit associated with revascularization compared with medical therapy in patients with no prior coronary artery disease undergoing stress myocardial perfusion single photon emission computed tomography. *Circulation*. 2003;107(23):2900–7.
- Giri S, Shaw LJ, Murthy DR, Travin MI, Miller DD, Hachamovitch R, et al. Impact of diabetes on the risk stratification using stress single-photon emission computed tomography myocardial perfusion imaging in patients with symptoms suggestive of coronary artery disease. *Circulation*. 2002;105(1):32–40.
- Kumar D, Sethi RS, Bansal S, Namgyal PA, Sehgal AK, Malik TS. Diagnostic Accuracy of Stress Myocardial Perfusion Imaging in Indian Diabetic Patients: A Single Centre Experience. *Indian J Nucl Med*. 2017;32(3):177–83.
- De Lorenzo A, Lima RS, Siqueira-Filho AG, Pantoja MR. Prevalence and prognostic value of perfusion defects detected by stress technetium-99m sestamibi myocardial perfusion single-photon emission computed tomography in asymptomatic patients with diabetes mellitus and no known coronary artery disease. *Am J Cardiol*. 2002;90(8):827–32.
- De Lorenzo A, Souza VF, Glerian L, Lima RS. Prognostic Assessment of Diabetics Using Myocardial Perfusion Imaging: Diabetes Mellitus is Still a Coronary Artery Disease Equivalent. *Open Cardiovasc Med J*. 2017;11:76–83.
- Mitevska IP, Baneva N, Srbinovska E, Stojanovska L, Apostolopoulos V, Bosevski M. Prognostic implications of myocardial perfusion imaging and coronary calcium score in a Macedonian cohort of asymptomatic patients with type 2 diabetes. *Diab Vasc Dis Res*. 2017;14(4):285–94.
- Verberne HJ, Acampa W, Anagnostopoulos C, Ballinger J, Bengel F, De Bondt P, et al. EANM procedural guidelines for radionuclide myocardial perfusion imaging with SPECT and SPECT/CT: 2015 revision. *Eur J Nucl Med Mol Imaging*. 2015;42(12):1929–40.
- Hachamovitch R, Berman DS, Shaw LJ, Kiat H, Cohen I, Cabico JA, et al. Incremental prognostic value of myocardial perfusion single photon emission computed tomography for the prediction of

in both men and women. Similarly, Berman et al. [25] further demonstrated that the SSS predicted outcome in both diabetic men and women. Outcome was significantly higher in diabetic patients than in nondiabetics, and the severity of the defect predicted the event rates. Cardiac events are, however, significantly higher in diabetic patients with an abnormal scan, resulting in a three- to eight-fold increased risk compared with diabetic patients with a normal scan, and the severity of the perfusion abnormality in the diabetic population is proportionately related to outcome [26]. These findings are consistent with the assumption that diabetes contributes to an accelerated path of CAD complications. Diabetic patients are predisposed to a more aggressive form of vascular disease with diffuse coronary atherosclerosis and significantly higher incidence of cardiac events [4].

CONCLUSION

Our study adds to the body of evidence that the MPI continues to have an important diagnostic and prognostic value in evaluation of CAD, particularly in diabetics. In diabetic patients, the cumulative rate of cardiac events was higher and the event-free survival was worse than in patients without DM. We found that MPI could help in predicting cardiac events in diabetics and the most important predictors were the size of stress perfusion defect, SSS, and SDS.

ACKNOWLEDGMENT

This paper is the part of Siniša Stanković's doctoral thesis and presents some of the results that will be published in the thesis.

Conflict of interest: None declared.

- cardiac death: differential stratification for risk of cardiac death and myocardial infarction. *Circulation*. 1998;97(6):535–43.
11. Kang SH, Choi HI, Kim YH, Lee EY, Ahn JM, Han S, et al. Impact of Follow-Up Ischemia on Myocardial Perfusion Single-Photon Emission Computed Tomography in Patients with Coronary Artery Disease. *Yonsei Med J*. 2017;58(5):934–43.
 12. García-Ulloa AC, Lechuga-Fonseca C, Del Razo-Olvera FM, Aguilar-Salinas CA, Galaviz KI, Narayan KMV, et al. Clinician prescription of lipid-lowering drugs and achievement of treatment goals in patients with newly diagnosed type 2 diabetes mellitus. *BMJ Open Diabetes Res Care*. 2021;9(1):e001891.
 13. Moonesinghe R, Beckles GLA, Liu T, Khoury MJ. The contribution of family history to the burden of diagnosed diabetes, undiagnosed diabetes, and prediabetes in the United States: analysis of the National Health and Nutrition Examination Survey, 2009–2014. *Genet Med*. 2018;20(10):1159–66.
 14. Ehl NF, Kühne M, Brinkert M, Müller-Brand J, Zellweger MJ. Diabetes reduces left ventricular ejection fraction – irrespective of presence and extent of coronary artery disease. *Eur J Endocrinol*. 2011;165(6):945–51.
 15. Chareonthaitawee P, Sorajja P, Rajagopalan N, Miller TD, Hodge DO, Frye RL, et al. Prevalence and prognosis of left ventricular systolic dysfunction in asymptomatic diabetic patients without known coronary artery disease referred for stress single-photon emission computed tomography and assessment of left ventricular function. *Am Heart J*. 2007;154(3):567–74.
 16. Nakajima K, Nakamura S, Hase H, Takeishi Y, Nishimura S, Kawano Y, et al. Risk stratification based on J-ACCESS risk models with myocardial perfusion imaging: Risk versus outcomes of patients with chronic kidney disease. *J Nucl Cardiol*. 2020;27(1):41–50.
 17. Koh AS, Lye WK, Chia SY, Salunat-Flores J, Sim LL, Keng FYJ, et al. Long-Term Prognostic Value of Appropriate Myocardial Perfusion Imaging. *Am J Cardiol*. 2017;119(12):1957–62.
 18. Lu CH, Pei D, Wu CZ, Kua HC, Liang YJ, Chen YL, et al. Predictors of abnormality in thallium myocardial perfusion scans for type 2 diabetes. *Heart Vessels*. 2021;36(2):180–8.
 19. Morales DCV, Bhavnani SP, Ahlberg AW, Pullatt RC, Katten DM, Polk DM, et al. Coronary risk equivalence of diabetes assessed by SPECT-MPI. *J Nucl Cardiol*. 2019;26(4):1093–102.
 20. Pintaudi B, Scatena A, Piscitelli G, Frison V, Corrao S, Manicardi V, et al. Clinical profiles and quality of care of subjects with type 2 diabetes according to their cardiovascular risk: an observational, retrospective study. *Cardiovasc Diabetol*. 2021;20(1):59.
 21. Leutner M, Haug N, Bellach L, Dervic E, Kautzky A, Klimek P, et al. Risk of Typical Diabetes-Associated Complications in Different Clusters of Diabetic Patients: Analysis of Nine Risk Factors. *J Pers Med*. 2021;11(5):328.
 22. Hage FG, AlJaroudi WA. Review of cardiovascular imaging in the Journal of Nuclear Cardiology 2019: Single-photon emission computed tomography. *J Nucl Cardiol*. 2020;27(4):1171–9.
 23. Branch M, German C, Bertoni A, Yeboah J. Incremental risk of cardiovascular disease and/or chronic kidney disease for future ASCVD and mortality in patients with type 2 diabetes mellitus: ACCORD trial. *J Diabetes Complications*. 2019;33(7):468–72.
 24. Kang X, Berman DS, Lewin HC, Cohen I, Friedman JD, Germano G, et al. Incremental prognostic value of myocardial perfusion single photon emission computed tomography in patients with diabetes mellitus. *Am Heart J*. 1999;138(6 Pt 1):1025–32.
 25. Berman DS, Kang X, Hayes SW, Friedman JD, Cohen I, Abidov A, et al. Adenosine myocardial perfusion single-photon emission computed tomography in women compared with men. Impact of diabetes mellitus on incremental prognostic value and effect on patient management. *J Am Coll Cardiol*. 2003;41(7):1125–33.
 26. Freeman M. Myocardial perfusion imaging in diabetes mellitus. *Can J Cardiol*. 2006;22 Suppl A:22A–25A.

Корелација између налаза перфузионе скинтиграфије миокарда и будућих срчаних догађаја код оболелих од дијабетеса типа 2

Синиша Станковић^{1,2}, Драгана Шобић-Шарановић^{3,4}, Валентина Солдат-Станковић^{1,5}, Вера Артико^{3,4}, Звездана Рајковача^{1,2}, Гостимир Микач⁶, Наташа Егељић-Михаиловић^{1,2}, Марина Мајкић^{1,2}

¹Универзитет у Бањој Луци, Медицински факултет, Бања Лука, Република Српска, Босна и Херцеговина;

²Универзитетски клинички центар Републике Српске, Завод за нуклеарну медицину и болести штитне жлезде, Бања Лука, Република Српска, Босна и Херцеговина;

³Универзитет у Београду, Медицински факултет, Београд, Србија;

⁴Универзитетски клинички центар Србије, Центар за нуклеарну медицину, Београд, Србија;

⁵Универзитетски клинички центар Републике Српске, Клиника за унутрашње болести, Бања Лука, Република Српска, Босна и Херцеговина;

⁶Специјалистички центар за болести штитне жлезде, Бања Лука, Република Српска, Босна и Херцеговина

САЖЕТАК

Увод/Циљ Перфузиона скинтиграфија миокарда (ПСМ) корисна је у евалуацији коронарне артеријске болести код оболелих од дијабетеса типа 2 (ДТ2). Ипак, преваленца исхемије код њих и могућност предвиђања будућих срчаних догађаја су нејасни.

Циљ је био одредити инциденцу срчаних догађаја код оболелих од ДТ2 и везу између њих и налаза ПСМ.

Метод Проспективно су испитиване две групе болесника са средњим до високим ризиком за коронарну артеријску болест, 98 са ДТ2 и 100 без, који нису имали ранију коронарну реваскуларизацију. Свима је урађена ^{99m}Tc-sestamibi ПСМ са дипиридамолом. Подаци о срчаним догађајима су сакупљени током двогодишњег праћења.

Резултати Срчани догађаји су настали код 17,3% испитаника са ДТ2 и 8% испитаника без ДТ2 ($p = 0,048$). Испитаници са ДТ2 су имали краће време преживљавања без срчаног догађаја – 24,7 месеци (95% CI 23,2–26,2) према 28,5 месеци (95% CI 27,4–29,5) код оних без ДТ2 ($p = 0,046$). Независни

предиктори настанка срчаних догађаја су били мушки пол ($p = 0,010$), ранији инфаркт миокарда ($p < 0,001$), присуство ангинозних тегаба ($p = 0,014$) и све варијабле добијене из налаза ПСМ. Код испитаника са ДТ2, након корекције и прилагођавања са варијаблама добијеним из налаза ПСМ, значајни предиктори су били величина испада перфузије у оптерећењу ($p = 0,022$), укупан збир бодова у оптерећењу (*summed stress score – SSS*) ($p = 0,011$) и укупна разлика бодова између *SSS* и укупног збира бодова у мировању (*summer difference score – SDS*) ($p = 0,044$).

Закључак Код оболелих од ДТ2, кумулативна стопа срчаних догађаја је била виша, а време преживљавања до настанка срчаног догађаја краће. ПСМ може помоћи у предвиђању будућих срчаних догађаја код оболелих од ДТ2, а најважнији предиктори су били величина испада перфузије у оптерећењу, *SSS* и *SDS*.

Кључне речи: перфузиона скинтиграфија миокарда; дијабетес; коронарна артеријска болест; срчани догађаји